



## ~ Pictorvision at the 2009 Cine Gear Expo ~

Pictorvision provides the perfect stabilized solution for all production needs. From the industry's only full suite of aerial products to our 35 years of experience, expertise and vast industry knowledge, our customers agree, Pictorvision is the best stabilized and precision control solution provider in the industry.

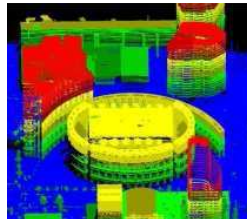
Come visit us at **BOOTH #122** at the **2009 Cine Gear Expo**, where we will be featuring:

- The **NEW PictorFX** - our newest product innovation, the PictorFX is a 3-D modeling system which generates extremely high resolution, 3-D digital images and maps for a variety of production applications
- Product demonstrations, including our **brand new eclipse**
- Information about our services and our full suite of stabilized camera systems

## PictorFX



*acquire 3-D imagery*



*develop a 3-D blueprint*



*construct a 3-D model*

### What is the PictorFX

The PictorFx enables set designers, special effects teams and production crews to create high-quality, accurate 3-D models – this creative, innovative system helps to solve some of the tough technical challenges associated with the creation, coordination and management of digital information in both pre and post production.



Come check out Pictorvision at Cine Gear Expo Booth #122.

### PictorFX Applications

#### Set Design Visualization

The PictorFx enables users to plan, track and digitally construct and reconstruct production-sets.

#### Information Modeling

PictorFx enables production teams to obtain structural and spatial information, from the air or ground information - providing users with a 3-D view of every shot, from every camera, at every angle.

#### Visual Effects

Using the PictorFx system, image data can easily be integrated with CG objects - a creative and cost effective approach in generating digital 3-D images and graphics.



### PictorFX Capabilities

#### ~ Background 3-D plate shots

#### ~ Set Documentation & 3-D Blue Prints

#### ~ Pre-Visualization with virtual sets:

- Plan and test camera and lighting angles
- Plan and test camera moves
- Pre-plan shooting and equipment logistics

#### ~ Set Extensions

#### ~ Composites:

- Topography to ground characters feet
- Accurate shadow casting
- Match moving virtual camera to live-action camera

For more information please contact us today.